

TRACKLINK MIDI to USB Interface
Windows Vista Install Instructions
Revision 1.0, April 15, 2008

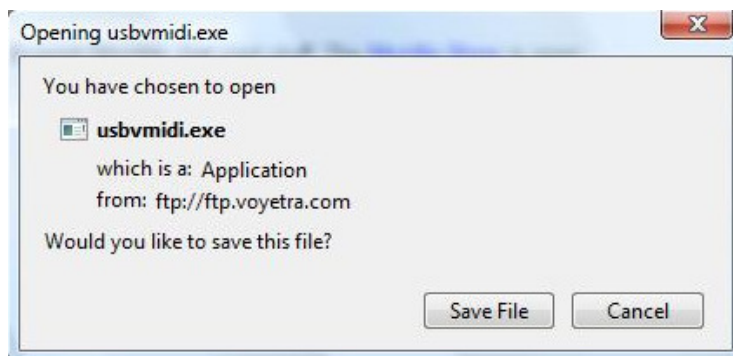
Thank you for purchasing the *TRACKLINK* MIDI to USB Interface by Hosa Technology! To get *linked* and start *tracking*, please follow these instructions closely. Failure to do so may compromise your *TRACKLINK* experience.

Before you begin, please turn on your personal computer and let it complete its initialization processes. Turn on your MIDI device, but do *not* plug in your *TRACKLINK* MIDI to USB Interface until instructed to do so.

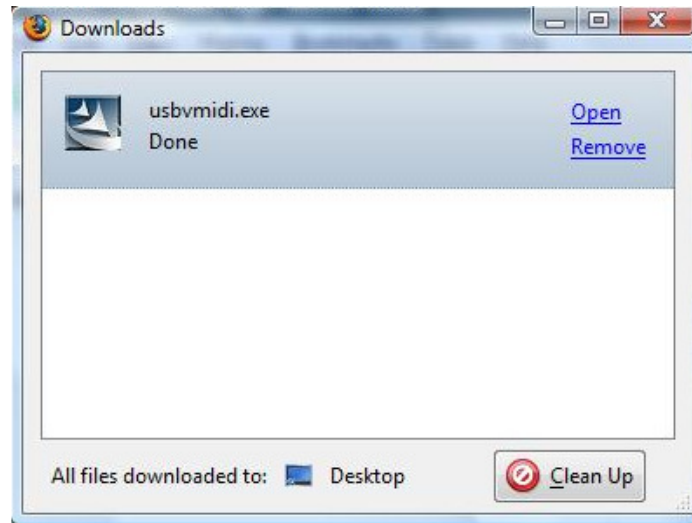
1. Confirm that your version of Windows Vista is a 32-bit operating system. Go to Start > Control Panel > Classic View > System. If yours is a 32-bit operating system you may proceed with the installation.
2. Open your web browser and type the following web address into its search window:

<ftp://ftp.voyetra.com/pub/tbs/usbmidi/usbvmidi.exe>

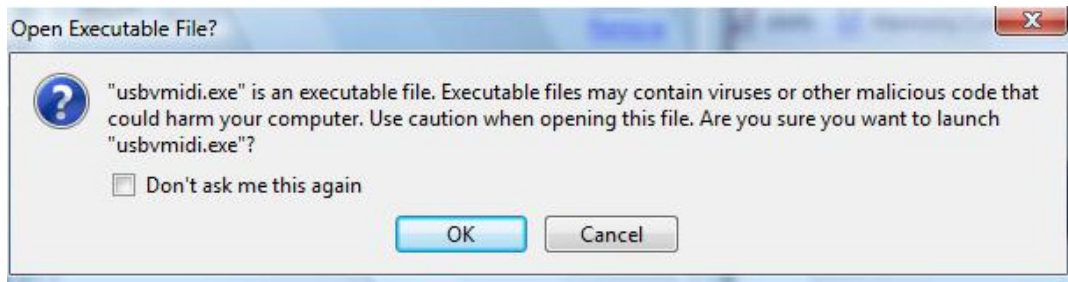
Press the Enter key to begin the download. A dialog box will ask you if you would like to save this file. Click "Save File" to save it to your desktop.



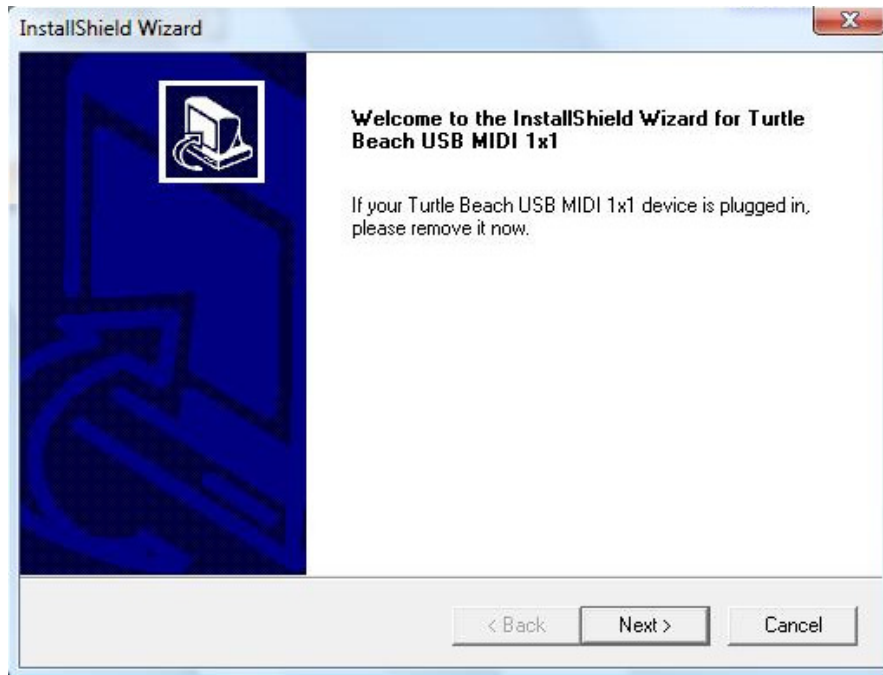
3. The Download Manager will appear. When the Download Manager indicates that the download is done, click "Open" to open the file.



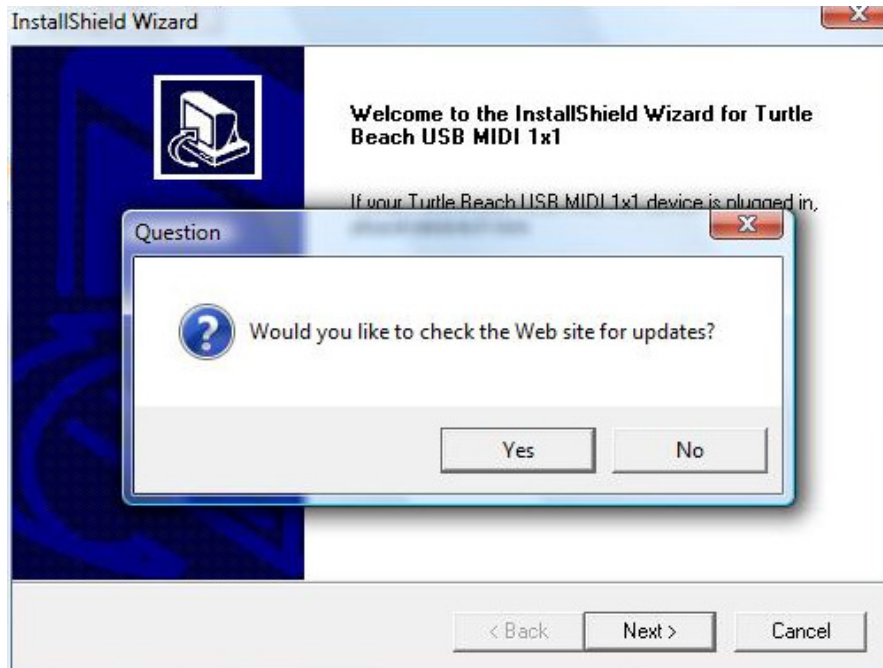
4. A dialog box *may* ask you if you want to open an executable file. If it does so, click "OK" to open the file.



5. The InstallShield Wizard will appear and ask you to unplug your device. If you have not already done so, unplug the *TRACKLINK* MIDI to USB Interface and click "Next" to continue.



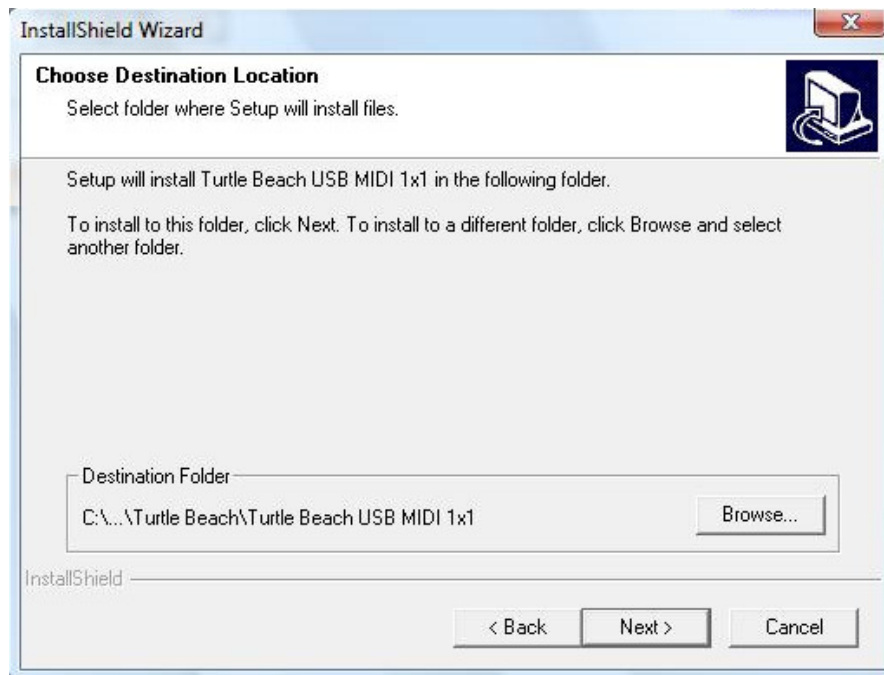
6. A dialog box will ask you if you want to check for updates. Click "No" to proceed with the installation. Clicking "Yes" will not work on all systems.



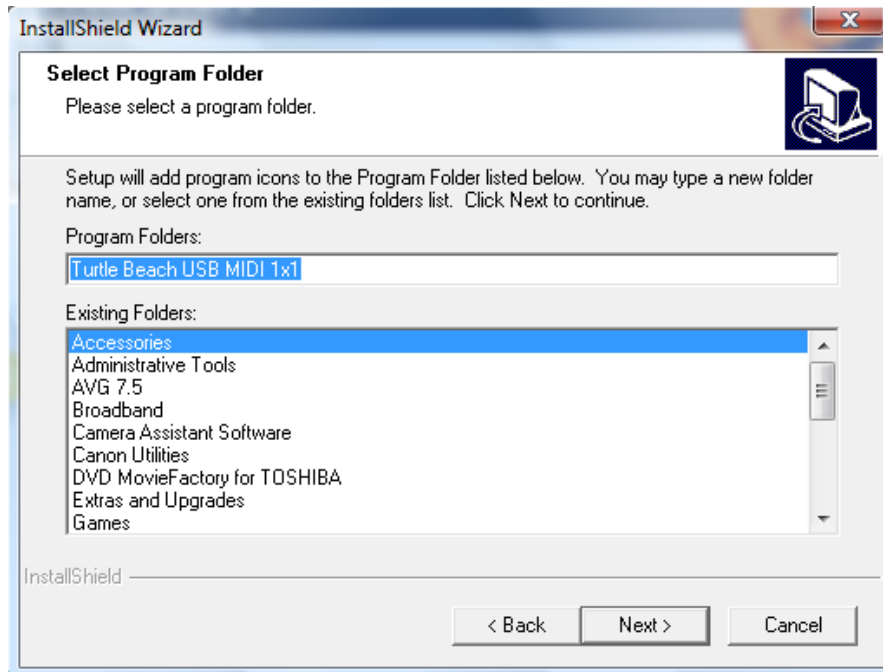
7. Read the terms of the License Agreement. Click "Yes" to accept these terms and proceed with the installation. Clicking "No" will terminate the installation.



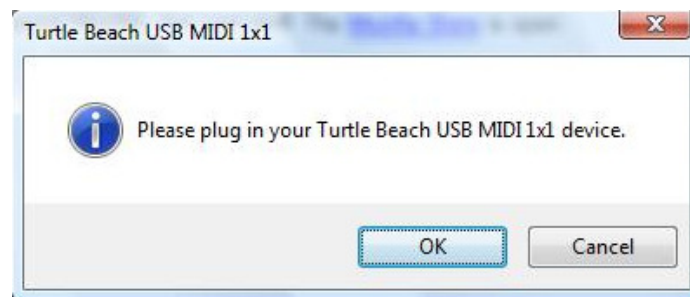
8. Choose a destination location for the driver. Click "Next" to install it in the default location (recommended) or browse to select a different location. If you select a different location, please note it for future reference.



9. Select a program folder for the driver. Click "Next" to create a new folder (recommended) or browse to select a different folder. If you select a different folder, please note it for future reference.



10. A dialog box will ask you to plug in your device:

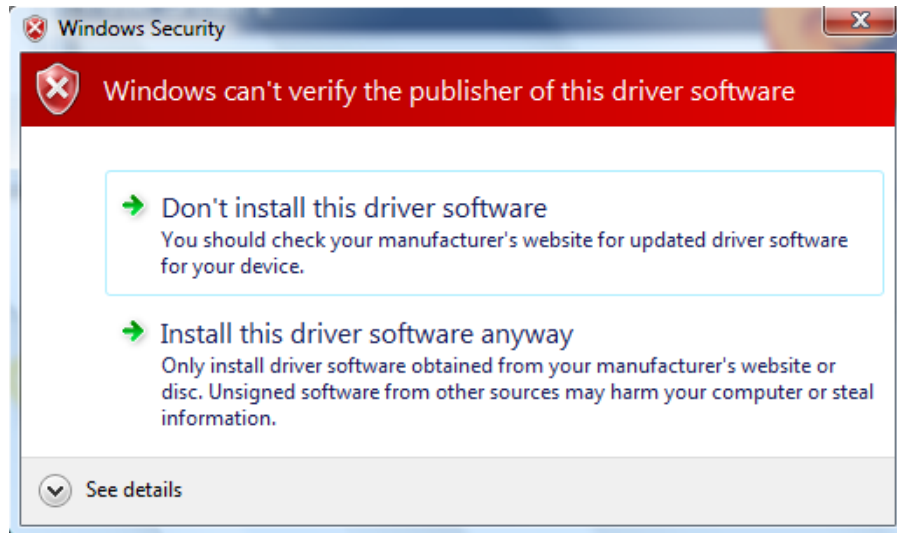


11. Please take care to connect the *TRACKLINK* MIDI to USB Interface as follows:
 - a. The MIDI IN plug to the MIDI OUT port on your MIDI device
 - b. The MIDI OUT plug to the MIDI IN port on your MIDI device
 - c. The USB plug to a USB port on your computer—NOT a USB hub!

If you are using a MIDI device that is only a controller, the MIDI OUT plug will remain disconnected. Click "OK" to proceed with the installation.

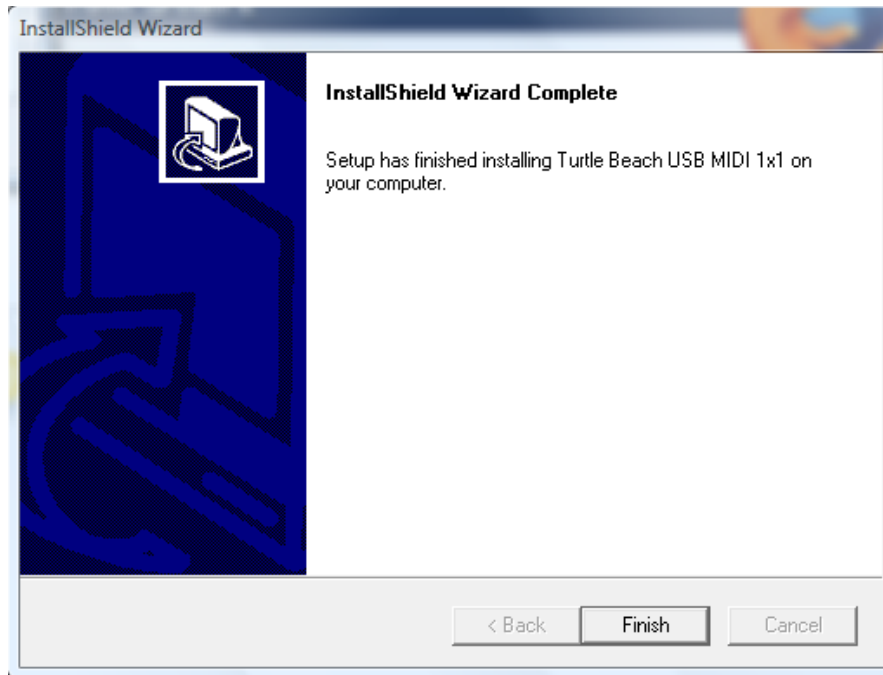
IMPORTANT: The InstallShield Wizard will “map” the driver to the USB port that you select, so the interface must always be plugged into this port in order to function properly.

12. Windows Vista, not the InstallShield Wizard, will display the following Windows Security warning:

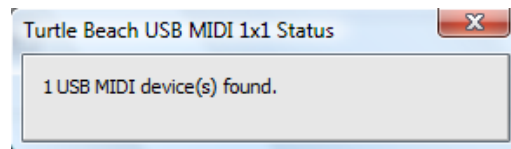


This occurs because Microsoft has not *tested* the driver with Windows Vista. Hosa Technology has tested the driver and guarantees compatibility with all supported operating systems, including Windows Vista. You may safely click “Install this driver software anyway” to ignore this error and proceed with the installation.

13. When the InstallShield Wizard indicates that installation is complete, click "Finish."



A dialog box will indicate that one USB MIDI device has been found:



When the device is found, two vertical green lights will appear in the Taskbar. When lit, these lights indicate that MIDI data being received via the *TRACKLINK* MIDI to USB interface. If the device is not found, make sure that the cable is firmly plugged-in to your computer and run SoundCheck.